

Keeping the Community Safe

Chairs and Conveners

MARY JO STRASSBURG-ALDAL (Chair)
Colorado Springs Police Department

BRETT LACEY (Co-Convener)
Colorado Springs Fire Department

TRESSIE KNOWLTON (Co-Convener)
TESSA

Data and Administrative Assistance

DAWN BENTLEY
Fountain Police Department

LIZ BROWN
El Paso County Sheriff's Office

GLENDA KELLY
Colorado Springs Police Department

MOLLY MILES
Colorado Springs Police Department

Members

CLAIRE ANDERSON
El Paso County Bar Association

REGINA DIPADOVA
Spring Creek Youth Services

LARRY DURANDETTE
Agilent Technologies, Inc.

RODNEY GEHRETT
El Paso County Sheriff's Office

RICHARD HANSEN
Public Safety Sale Tax Oversight Committee

MAILE GRAY
DriveSmart Colorado

SCOTT MCCUNE
American Medical Response

MELISSA MITCHELL
Pikes Peak Library District

TED MOSSMAN
Vectra Bank Colorado

SHIRLEY RHODUS
El Paso County Department of Human Services

TINA YOUNG
Colorado Springs Police Department



Photograph courtesy of Steven "Smitty" Smith

Public safety involves the prevention of and protection from events, such as crimes and disasters that could endanger public well being. Individuals tend to evaluate public safety through the lens of their own experiences, others with whom they interact, or by what they read in newspapers and see on television news. Citizens need to feel safe while living, working, driving, and playing in our great community. Law enforcement, fire, emergency medical services, the judicial system and numerous agencies all work together to keep the citizens of our region safe.

Public Safety Indicators

Many indicators measure public safety, such as crime rate, DUI arrests, motor vehicle fatalities, repeat offenders, juvenile crime, total fire loss and fire loss per capita, neighborhood safety, child abuse, and domestic violence. Public safety indicators may measure dangers to citizens that have already occurred (i.e. crimes, arrests, fatalities, fire loss, and abuse reports), while others measure the region's ability to respond, intervene, and prevent future danger, creating a strong foundation for public safety.

The community is responsible for ensuring equitable and effective public safety for all citizens. The number of available responders affects service levels and response times, especially in the current economic climate when coupled with a growing population. Continued, and perhaps increased, investment in support of public safety is critical if we want to attract business and improve the community's quality of life.

Safety in the Home and Neighborhood

Citizens' sense of safety in their homes and communities is a key indicator of the local government's success in providing public safety. Safety in the home is measured by the occurrence of child abuse, domestic violence, and pet abuse; unfortunately, these crimes are among the most highly underreported. Tracking referrals and services provided to victims can provide information about the prevalence of family safety.

Child abuse is an act or omission that may ultimately result in serious trauma or death; it includes physical, sexual, or emotional abuse; inadequate food, clothing, shelter, medical care, or supervision; an injurious environment; or exposure to controlled substances.

Domestic violence is a pattern of abusive behavior (emotional, verbal, physical, or sexual) used to establish power and control over another person through fear, intimidation and the use of violence. Domestic violence often leads to severe physical injury, homelessness, mental illness and even homicide, while negatively affecting every member of the household, the neighborhood and the community.

Pet abuse may be an indicator of child abuse and domestic violence, thus its prevention is also a matter of public safety. Preventing the use of pet maltreatment as tools to control family members decreases the prevalence of animal cruelty, child abuse, and domestic violence.

Conclusion

The quality of life in El Paso County continues to rely on citizens' willingness to take responsibility for personal and community safety, while continually finding ways to identify and address issues that arise. Law enforcement agencies, emergency response teams, human services agencies, and prevention organizations all work together to find effective, efficient ways to sustain the current level of public safety in El Paso County.

The Pikes Peak Region offers many innovative programs to educate citizens and improve public safety. The Colorado Springs Police Department's Homeless Outreach Team (HOT), Downtown Area Response Team and the Civilian/Military Law Enforcement Collaborative have utilized initiative, innovation, and partnerships with the community to create incredibly successful programs improving law enforcement's response to specific populations and communities. The International Association of Chiefs of Police (IACP) and DynCorp recognized this effort in 2010 by awarding CSPD, Peterson Air Force Base Security Forces, and Fort Carson Department of Emergency Services their second annual International Award for Civilian Law Enforcement/Military Cooperation. All three programs are shining examples of significant achievement through positive working relationships.

The El Paso County Community Detoxification Facility opened in August 2009 with a mission to provide a safe and effective continuum of care for citizens in need of substance abuse and addiction treatment. The Detox Facility is operated by the El Paso County Sheriffs' Office, and primarily funded by Memorial Hospital, Penrose Hospital, the Colorado Division of Behavioral Health, and grants from Pikes Peak United Way. The facility serves a crucial role within the community and significantly reduces the impact of substance abuse on local hospitals and emergency service providers.

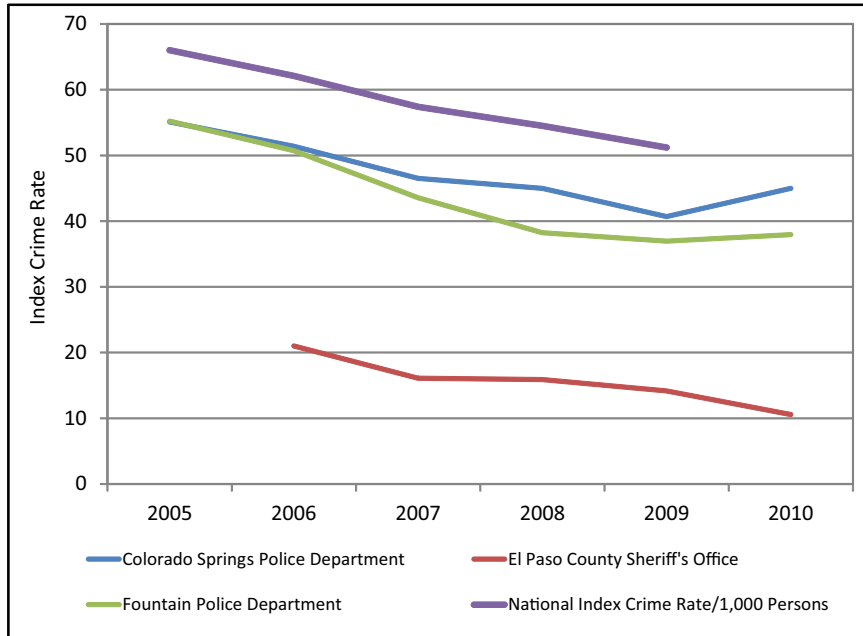
Several pro-active organizations are working to promote safety and improve the quality of life for youth in the Pikes Peak Region. Colorado Springs Teen Court provides an alternative to Municipal Court sentencing for first-time misdemeanors committed by youth between 10 and 18 years old. All sentences include community service and jury duty in a subsequent Teen Court trial. The Colorado Springs Fire Department's Summer Heat program is a Firecamp for teenage girls introducing young women to career opportunities in the fire service. FireFactor is a prevention based program used to target Juvenile Firesetting in 6th and 7th grade demonstrating the reality of fire damage and loss against those images typically seen in popular mainstream media.

Public safety is a mix of perceptions and facts available to citizens in the community. Listening to the news everyday about criminal activity and hearing radio reports of recent bank robberies can lead people to conclude that they live in an unsafe community, yet the crime rate in Colorado Springs is lower than the national average. The indicators presented provide a clearer perspective on how Colorado Springs and El Paso County stack up in the area of public safety.

-Public Safety-

Crime Rate

Index Crime Rate Comparison (Per 1,000 People)



The first Chart shows Index Crimes per 1,000 persons in Colorado Springs, Fountain, unincorporated El Paso County and the U.S. The U.S. rate is for cities of similar size to Colorado Springs.

Index Crimes include: murder, sexual assault, robbery, aggravated assault, burglary, larceny, and auto theft.

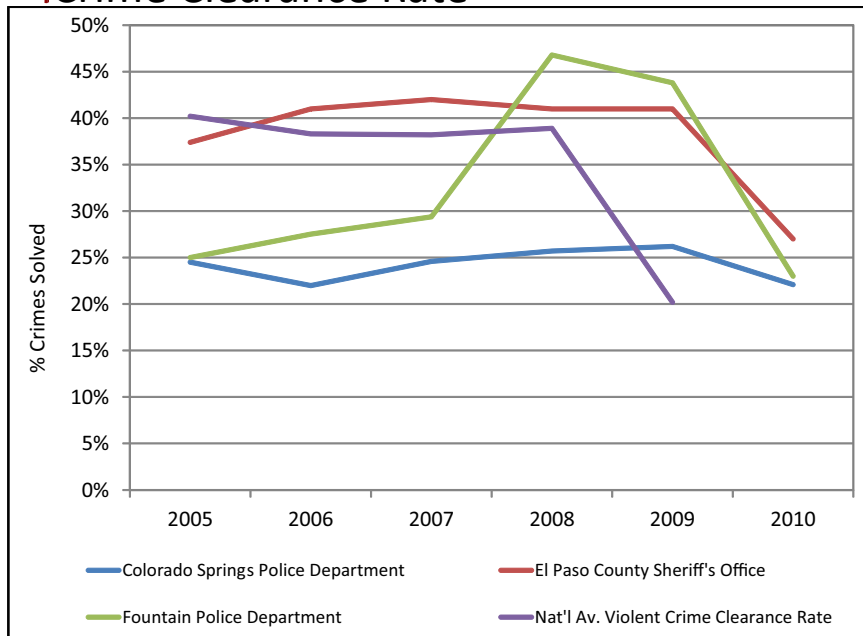
Why is This Important?

Tracking the local crime rate allows us to scrutinize our strategies in order to ensure we are using the most effective measures to reduce crime in our community.

How are We Doing?

In 2009, the Index Crime rate in Colorado Springs was 40.1 - below the national average of 51.2. However, the crime rate is trending upward in 2010. As noted in the graph, the Index Crime rate for Fountain Police Department rose slightly from 2009 to 2010.

Crime Clearance Rate



Source for both charts: Colorado Springs Police Department, El Paso County Sheriff's Office, Fountain Police Department

Potential for Action

As noted in the 2010 report, both the Colorado Springs Police Department and El Paso County Sheriff's Office continue to expect crime rate increases due to the current sluggish economy and high unemployment rates. This economic downturn correlates to the reduction in parks and recreation, community centers and other services available to citizens that indirectly assist law enforcement in the fight against crime.

The second Chart shows the clearance rate for Index Crimes solved by CSPD, EPSO, FPD; the U.S. Clearance rate indicates successfully solved crimes, and is affected by the number of officers investigating crimes, number of crimes, and investigative tools. Another indicator of law enforcement success is citizen awareness and assistance.

Why is This Important?

Tracking clearance rates complements the strategies for tracking the crime rate in that it is a more narrow focus on the efforts made to keep the community safe by apprehending

those responsible for the criminal behavior.

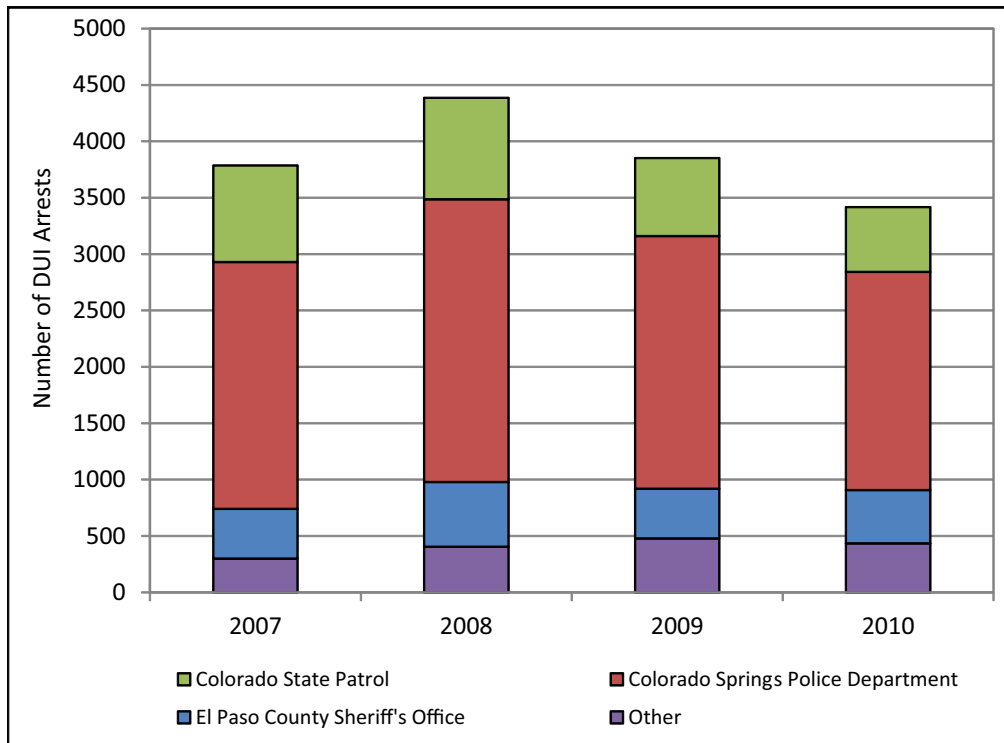
How Are We Doing?

The 2010 clearance rate has dropped to 22.10% in Colorado Springs, while the clearance rate also dropped notably for El Paso County to 27.00% and Fountain to 23.00%. National clearance rates were not available at the time of this publication; however, the 2009 clearance rate is 20.20%.

Potential for Action

In 2010, due to continued declining resources from the previous year, CSPD continued the adjustments that were made to meet the demands of investigative needs. Resources that were shifted from Property Crimes to maintain Violent Crimes investigations remained in place through 2010. In addition, Alternative Service Delivery was implemented in an effort to continue service to the public, while maintaining resources for the more serious crimes.

DUI Arrests



Source: Colorado Springs Police Department, El Paso County Sheriff's Office, Fountain Police Department, and Colorado State Patrol

This Chart shows counts from the three largest agencies in the region (Colorado Springs Police Department, El Paso County Sheriff's Office, and the Colorado State Patrol) and also includes combined data from the Pikes Peak Community College Campus Police, Ft. Carson PD, Monument PD, Fountain PD, Manitou Springs PD, University of Colorado at Colorado Springs Campus Police, Green Mountain Falls Marshal, and the Calhan PD – identified in the graph as "Other." Data collection for CSP and the other combined agencies began in 2007.

Why is This Important?

There were 435 DUI arrests in outlying areas. This is down from the all-time high of 479 arrests in 2009. The outlying areas are mimicking the larger agencies in that less manpower on the roads equals fewer arrests.



Photograph by IO Photo

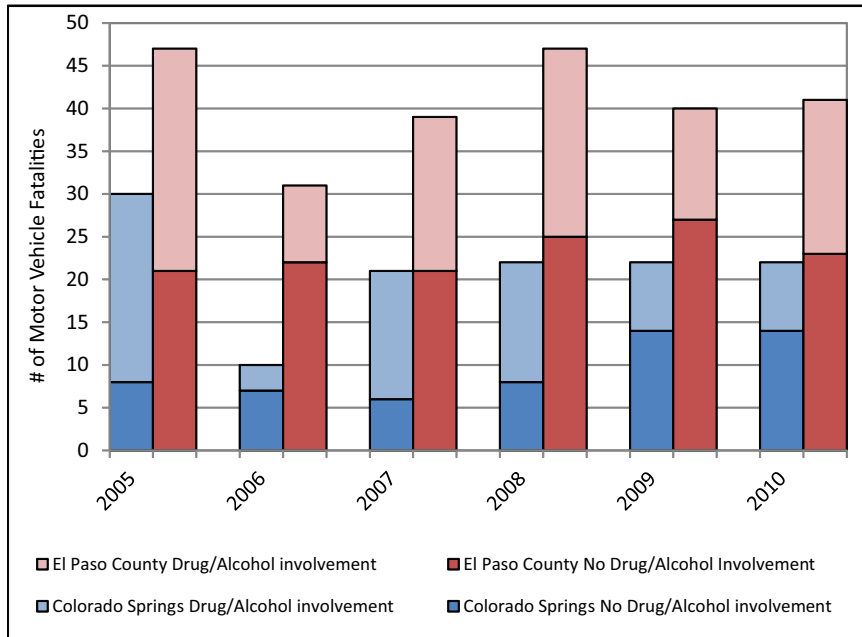
How are We Doing?

These numbers are not necessarily indicative of the number of impaired drivers on the road but rather the number apprehended, given the availability of police to patrol for these offenders.

Potential for Action

The ability to apprehend DUI offenders increases when targeted policing strategies are used. DUI enforcement may vary due to grant funding, budgetary allowances, and staffing. Citizens must also take personal responsibility for their actions and choose not to drive when impaired by drug or alcohol use

Motor Vehicle Fatalities



Source: Colorado Springs Police Department, Colorado Department of Transportation

The first Chart shows the number of fatal motor vehicle crashes in Colorado Springs and El Paso County, and indicates the percentage of the total fatalities that occurred each year that involved drugs and/or alcohol. Note that the graph reflects El Paso County fatality statistics, including the Colorado Springs fatalities. Because the population base in El Paso County is highest in Colorado Springs, the graph separates the fatalities that occurred within the City boundaries.

The second Chart details the number of drug/alcohol related fatalities in the City of Colorado Springs as compared to Albuquerque, NM.

Why is This Important?

Impaired driving impacts not only people who choose to drive intoxicated, but also innocent victims in their path. Comprehensive education, targeted enforcement and prosecution are critical.

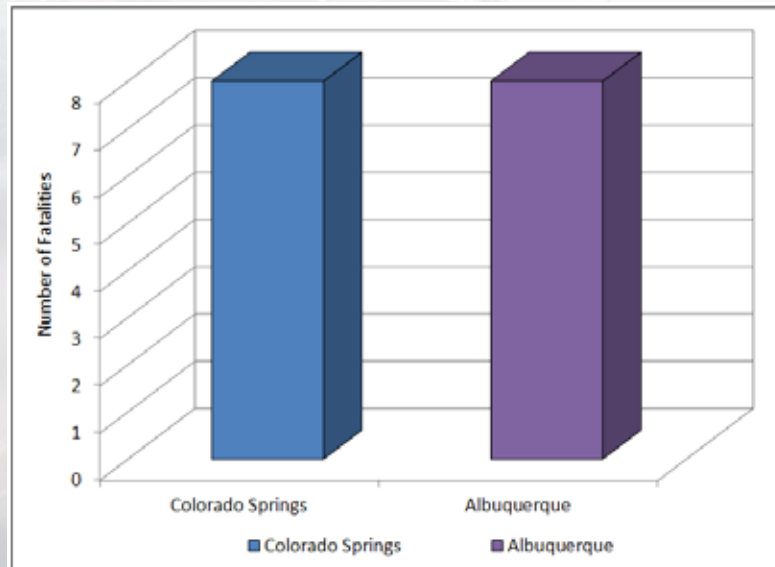
How are We Doing?

According to the National Highway Traffic

Safety Administration (NHTSA), about 11,000 people die in alcohol-impaired driving crashes each year – one every 48 minutes. NHTSA states that the national average for fatalities involving drug and alcohol impairment is nearly 33% of all traffic fatalities. The percentage of traffic fatalities involving drug and alcohol in El Paso County is regularly above the national average, and 2010 was no different. The total percentage of drug/alcohol related fatalities in El Paso County was 44%. While the number of DUI Arrests is generally much higher in the City of Albuquerque, the two cities shared exactly the same number of motor vehicle fatalities related to drugs and/or alcohol in 2010: 8.

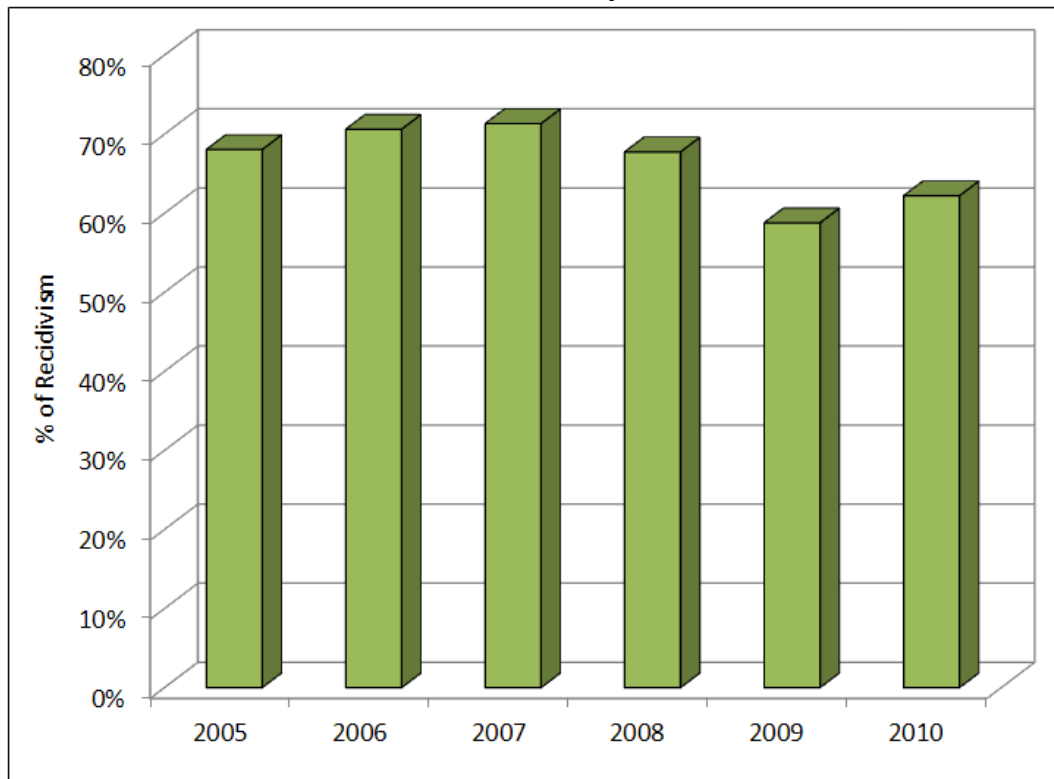
Potential for Action

Funding is critical for increasing education, enforcement and prosecution of offenders. Funding is also essential for law enforcement trainings, saturation patrols, DUI checkpoints and state-of-the-art equipment and upgrades.



Source: Colorado Springs Police Department, Albuquerque Police Department

Jail Recidivism in El Paso County



Source: El Paso County Sheriff's Office

This Chart shows the percentage rate of inmates in the El Paso County jail who are repeat offenders. Recidivism, which means returning to jail for a new crime, represents a population that victimizes a community and creates a burden on the criminal justice system

Why is This Important? The human cost and fiscal impact of recidivism is readily apparent. Repeat offenders are not productive members of society. While incarcerated, they do not support their families, have jobs, or pay taxes. They place a burden on strained government resources and budgets that have been stretched thin by the current economic crisis.

The cost to arrest, prosecute, and house criminals continues to rise, while the victims of crime and the families of the offenders are often left in the wake of the destructive cycle.

How are We Doing?

In 2010, 25,063 people, or approximately 4.0 % of the population, served time in the El Paso County jail. Of these, 62.2% had been previously incarcerated compared to 58.8% in 2009.

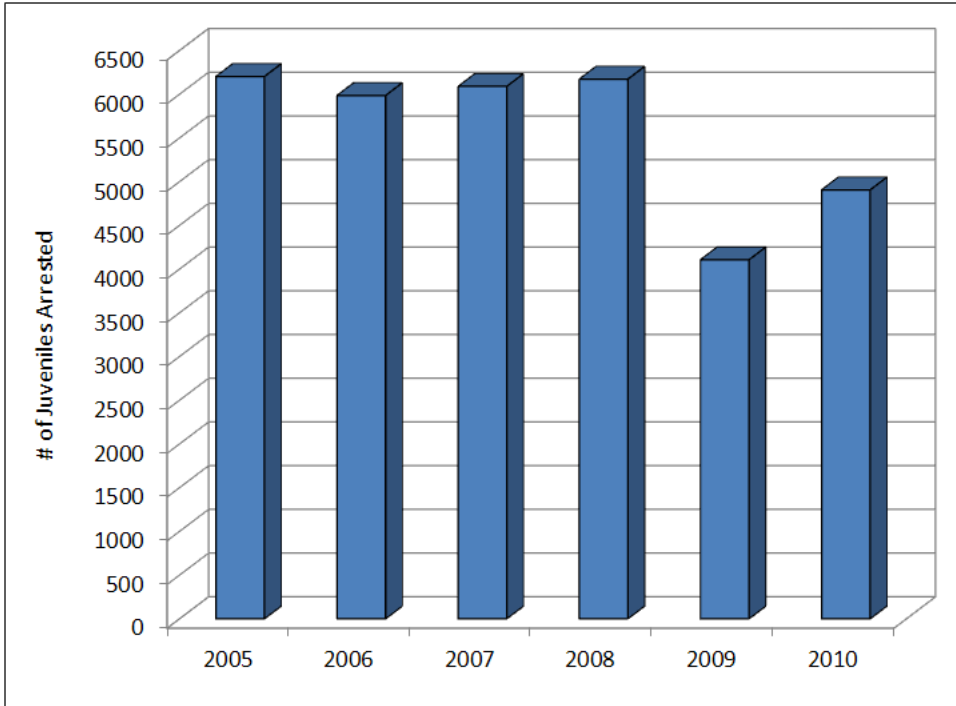
Potential for Action

Continue to support the Reintegration and Recovery program and Detox facility.

In an effort to reduce the recidivism rate of offenders sentenced to the El Paso County jail, the Reintegration and Recovery program was established in 2007 to provide participants with the education, life skills, substance abuse therapy and vocational preparation to successfully return to the community and become productive citizens. This program has shown positive results and helped many participants chart a new course in life. As of December 2010, 1310 inmates have successfully completed the program. Offenders have provided positive feedback emphasizing the tools and life skills necessary to break the cycle of the revolving door into the justice system. Additionally, the El Paso Detox facility opened in August 2009. The facility provides a safe and effective means for detoxification treatment, as well as an alternative to incarceration. This serves a crucial role within the community and significantly reduces the impact of substance abuse on local hospitals and emergency service providers.

Juvenile Crime

Juvenile Arrests in Colorado Springs and El Paso County



Source: Department of Youth Corrections, Colorado Springs Police Department, El Paso County Sheriff's Office

This Chart shows the number of youth in El Paso County who have been arrested by the Colorado Springs Police Department and El Paso County Sheriff's Office. The number of juveniles arrested represents 7.5% of the total number of youth under 18 years old in El Paso County. The number of arrests has increased by approximately 19%, or 800 arrests, from 2009.

The juvenile arrest rate includes arrests of juveniles for all criminal offenses including misdemeanors and felonies, of those arrests, only a certain percentage will be filed with the courts, which will then go to detention/probation status. If a youth commits a new offense while on probation and the court recommends commitment, the youth is sentenced to the Division of Youth Corrections.

The number of committed youth for El Paso County in 2008 was 78, in 2009 was 67 and in 2010 was 68. Although commitment numbers appear to be staying steady, as of this year 2011, in March commitments began to increase again.

Why is This Important?

Youth are our leaders of tomorrow and the community needs to offer safe environments where they can thrive and grow.

How are We Doing?

The Public Safety Vision Council would like to note the decrease in arrests and commits in 2009 and the current upward trend in 2010. Youth who are at high risk usually come from homes where drugs/alcohol, abuse and neglect are also present. The Council asks citizens to draw a correlation between these numbers and domestic violence and child abuse rates covered in this section. A number of prevention agencies have partnered to create programs aimed at helping young people make better choices and preventing our community's youth from re-offending. However, with the recent cuts in city and county programs, especially parks and recreation, it is imperative that our citizens continue to volunteer, mentor and support non-profits serving youth.

Potential for Action

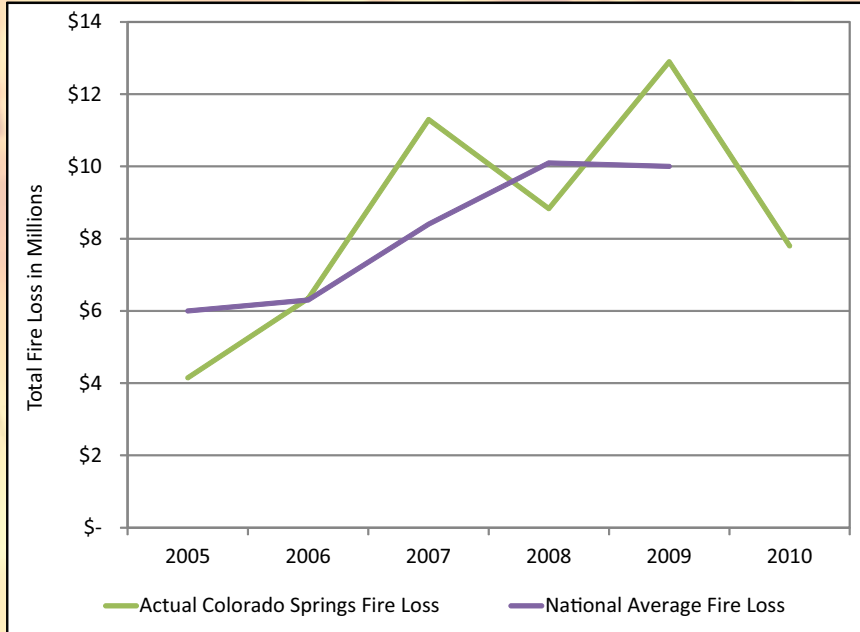
Get involved! Volunteer at one of the many youth serving organizations in El Paso County and make a difference in a youth's life.



Photograph courtesy of Steven "Smitty" Smith

Overall Fire Loss and Per Capita Fire Loss

Actual Fire Loss in Millions of Dollars



Source: Colorado Springs Fire Department, National Fire Protection Association

These Charts show total fire loss and per capita fire loss since 2005. City data is compared to national averages of cities with populations between 250,000 to 499,999; Colorado Springs has a population of 416,427. National data is provided by the National Fire Protection Association (NFPA), and is only available through 2009. City fire loss and national average fire loss are reported in millions of dollars while City and national per capita fire loss are reported in real dollars. The trends represent efforts toward fire prevention, mitigation and suppression.

The trend for total national fire loss shows a predicted increase of about 9% in 2010 from 2004. Our City's total fire loss trend is increasing with a prediction of a 47% increase from 2004. This is well above the 9% national increase shown.

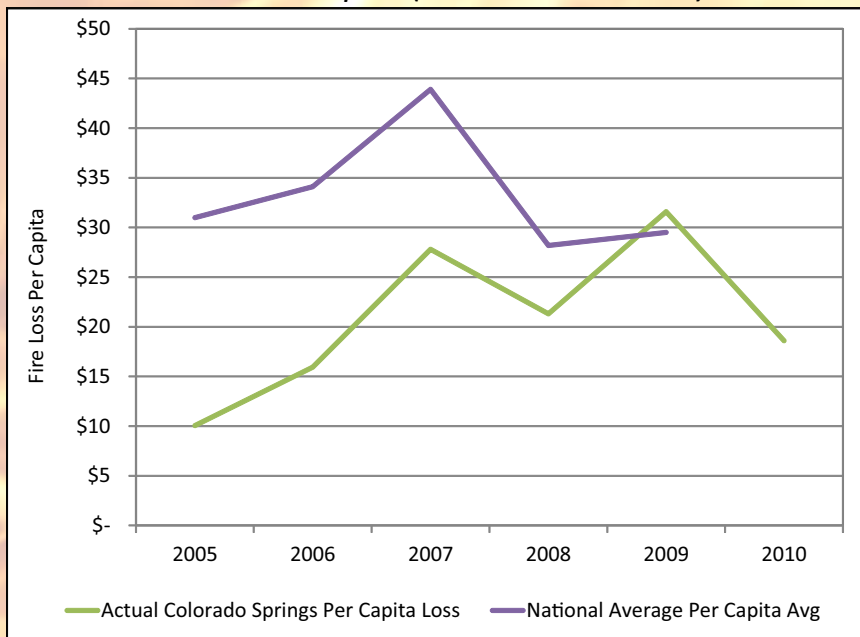
The per capita loss chart shows the predicted national loss to be about \$33.40 for 2010 which is only 2.5% above the 2004 national number of \$32.60. Our local per capita loss for

2010 was \$18.60 with a predicted per capita loss for 2011 of \$20.00. This reveals a 39% increase from 2004 which had a loss of \$14.10.

How are We Doing?

CSFD has a lower per capita fire loss than the national average; however, we may now have surpassed the total fire loss national average for comparable cities. While the spikes in actual city fire loss and per capita loss for 2007 and 2009 were due to individual or single

Actual Fire Loss Per Capita (Dollars Per Person)



Source: Colorado Springs Fire Department, National Fire Protection Association

property high dollar loss fires, our trend is surpassing the national averages in total fire loss and per capita fire loss. If history is comparable, the difficult economic conditions and resulting loss of resources over the last few years indicate we could expect local losses to increase. Unfortunately, it appears the local trend is doing just that.

Locally this move may hit a per capita fire loss in 2011 of \$20.00, a 39% increase over 2004 and possibly a 47% increase in total fire loss from 2004. Compared to a 2.5% and 9% national loss respectively, this is concerning. Additionally, NFPA statistics show over 60% of businesses that suffer serious fires never recover. Firefighter safety is also at greater risk because the larger the fire, the more hazardous it is to fight.

Potential for Action

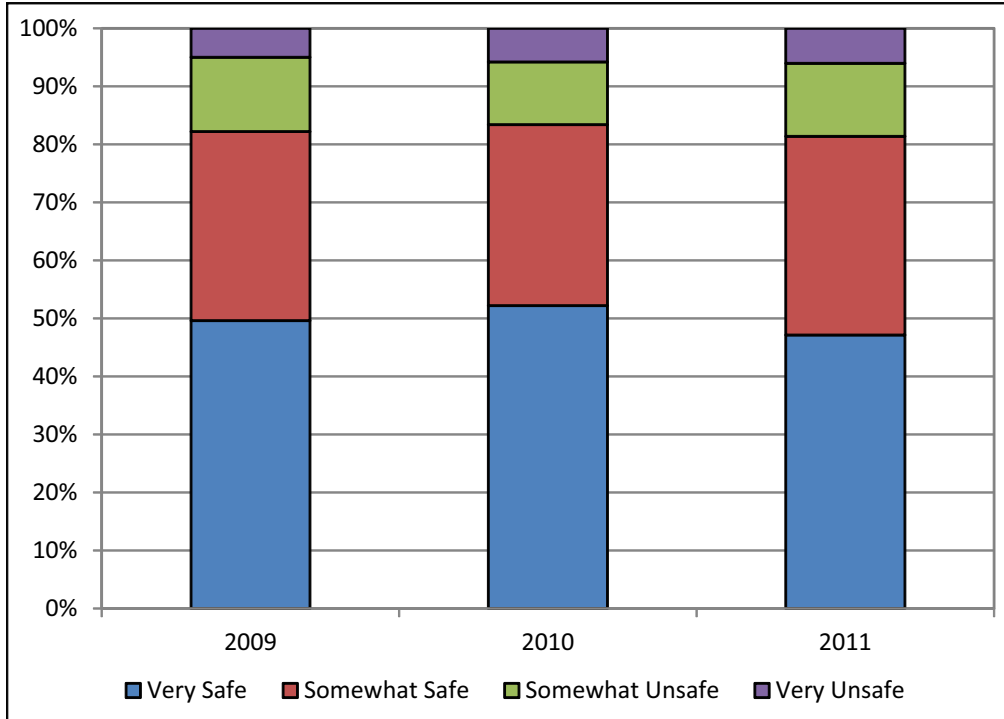
The 1973 federal report *America Burning* emphasized that more effort needed to be made in prevention and mitigation to reduce local and national fire loss. This is true today. More consistent and regular inspections coupled with fire safety education will work to

mitigate and reduce larger losses as well as increase firefighter safety. Strategies for increasing inspections and other progressive fire loss control measures should be investigated in order to maintain or reduce fire losses.

-Safety in the Home and Neighborhood-

Neighborhood Safety

How safe do you feel walking in your neighborhood at night?



Source: QLI Community Visioning Survey

Why is This Important?

We normally think of neighborhood safety in terms of crime rate and crime prevention. While this is a key component, a broader definition would include fire safety and citizens' response to natural disasters.

The El Paso County Sheriff's Office along with the Colorado Springs Fire and Police Offices have a number of excellent programs available to help promote increased neighborhood safety.

How are We Doing?

The greater Colorado Springs area continues to be safe place to live with a crime rate typically 10 points lower than the national index. However, in the last year the local crime clearance rates have fallen significantly – that is, more crimes are going unsolved.

Whether this is a single year aberration or a fundamental

change, only time will tell.

In 2009, 82% of the people polled said they felt very safe or somewhat safe walking around their neighborhood during the day; however, the statistic dropped to 71% when referring to the perception of night time safety. Even so, the three-year trend indicates that our citizens feel that their night-time safety has increased.

Potential for Action

Neighborhood safety starts with the individual citizen being aware of their surroundings. Refuse To Be A Victim[®] is a free four-hour program that teaches you how to develop a personal safety strategy. More information is available at <http://tinyurl.com/EPSo-Refuse-to-be-victim>. Many property crimes are "crimes of opportunity," and you can reduce chances of being the victim of a burglary or theft by anticipating the potential risks and taking steps to address them. The following tool is available at <http://tinyurl.com/EPSo-Home-Security-Survey> to assist you in the identification of possible security and safety issues.

Neighborhood Watch is probably the best known program in which a group of neighbors are willing to communicate with each other to pass along information on suspicious activity and report this to the police. While the Neighborhood Watch program does not include citizen patrols or citizen assist, it does require a commitment to meet twice per year and continuing education for block captains. Currently there are 754 active Neighborhood Watch groups in Colorado Springs. For more information, please see <http://tinyurl.com/EPSo-Neighborhood-Watch> or <http://tinyurl.com/CSPD-Neighborhood-Watch-HB2008>. Neighborhood Watch is about developing the "mindset" of keeping an eye out for each other.

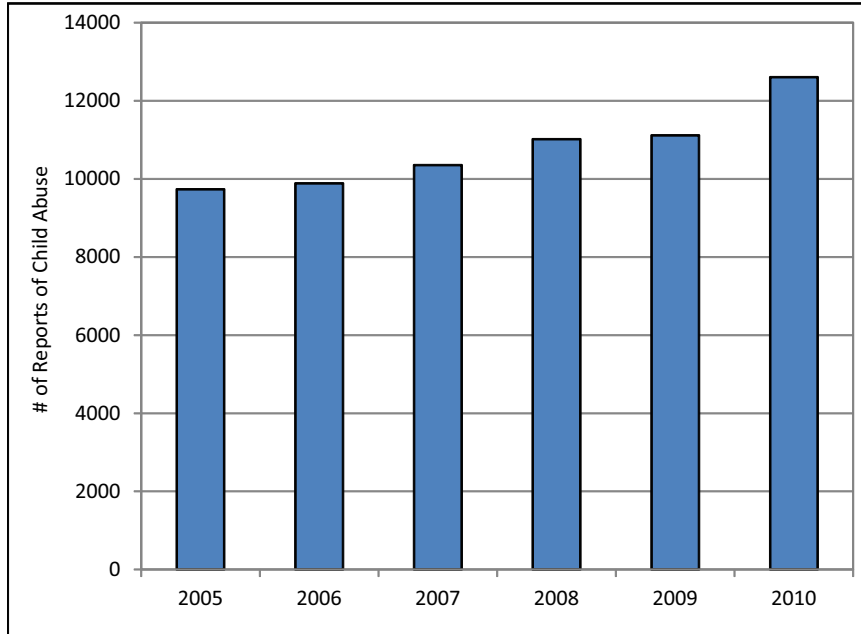
The third element of neighborhood safety, given the city's wild land-urban interface is fire safety. The Colorado Springs Fire Department has performed more than 35,360 evaluations by working with 59 homeowner associations and neighborhood organizations (<http://tinyurl.com/CSFD-Mitigation>).

For information into a broader range of topics, please see the Emergency Preparedness and Safety Guide (<http://tinyurl.com/CSFD-Emergency-Prep-Guide>). Lastly, Community Emergency Response Training (CERT) is a free course that provides citizens with basic training in disaster preparedness and response (<http://tinyurl.com/CSFD-CERT>).

As you can see neighborhood safety begins and ends with you, the citizen.

Child Abuse in El Paso County

Referral Calls



Source: El Paso County Department of Human Services

These charts show the number of child abuse and neglect referrals received by the El Paso County Department of Human Services (DHS), and the number of fatalities due to child abuse or neglect over the last five years. A child abuse and neglect referral is any report taken regarding child maltreatment and may include reports of adolescents who are beyond the control of their parent(s) or a danger to the community.

Death from abuse includes shaken babies, blunt force trauma, severe head injuries, burns, and gunshot wounds. Death as the result of neglect is often when a young child is left unsupervised and something happens like a drowning, hanging, or similar occurrence.

Why is This Important?

Increasing reports of child abuse and neglect signify stress and instability within families, which affect children's health and welfare.

thrive is hampered, sometimes seriously and permanently. Children are our future. Children are dependent upon their parents and other caretakers to look after them and keep them safe.

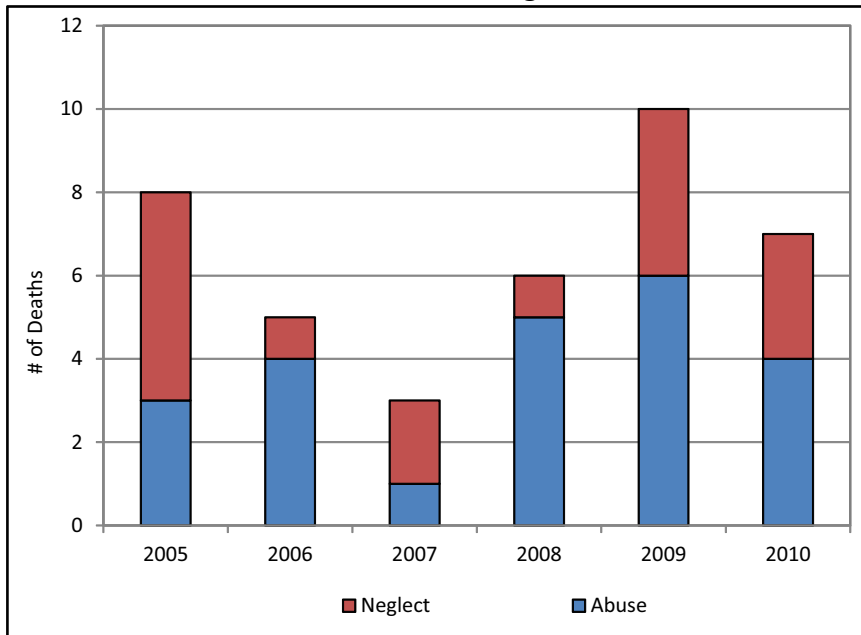
When children's basic needs for sufficiency and safety are not met, their ability to develop and

How are We Doing?

Referrals for child abuse and neglect continue to show a steady increase over the past five years, with a larger increase occurring in 2010. In 2010, for the third year in a row, El Paso County received the most child abuse and neglect referrals of all Colorado counties; 19% of all

the referrals made in Colorado come into El Paso County.

Child Fatalities due to Abuse or Neglect



Source: El Paso County Department of Human Services

One child death from abuse or neglect is too many. In 2010, 7 children were determined to have died as the result of child abuse or neglect; it is the third highest number in the last 6 years.

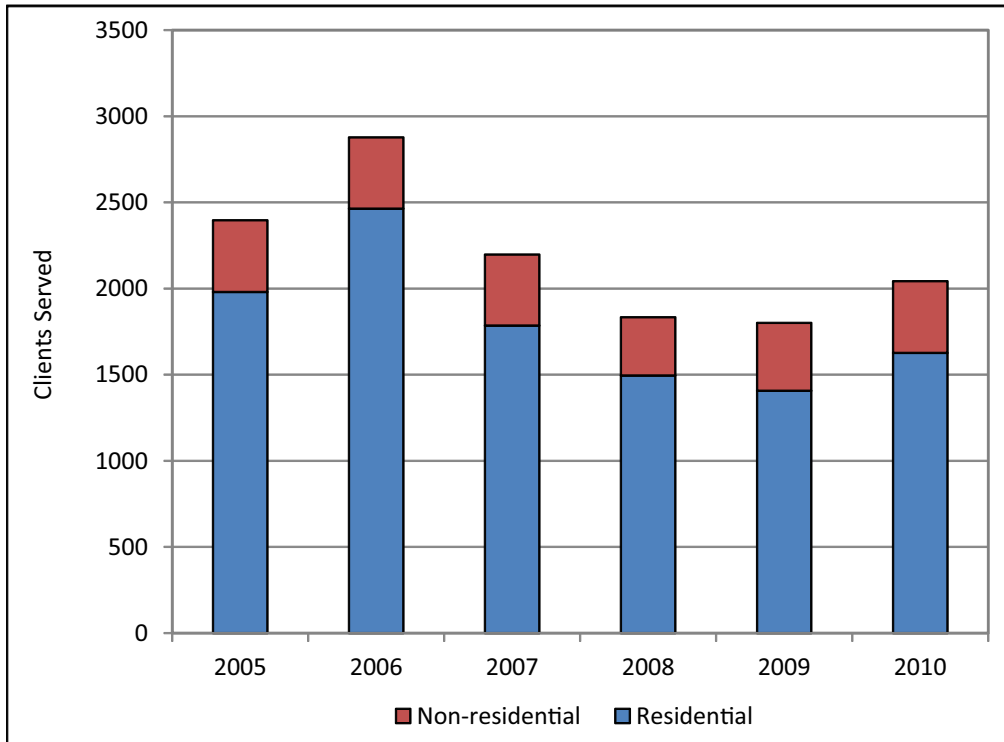
Potential for Action

The steady increase in child abuse and neglect referrals received by DHS shows a need for action. Parental substance abuse, young parents without support and knowledge of safe child rearing, and family violence contribute to child maltreatment. Rising numbers indicate a need for resources for early intervention strategies targeting substance abuse, mental health concerns, family violence, and programs addressing poverty.

A community that supports its families can help strengthen families and prevent child abuse and neglect.

Domestic Violence and Pet Abuse

Number of Calls to TESSA



Source: TESSA

This Chart shows the number of domestic violence and sexual assault victims receiving services from TESSA. Residential services represent the number of women and children who stayed in TESSA's Safehouse emergency shelter during 2010 and non-residential services represent the number of clients who came to TESSA's main office for confidential advocacy, counseling, children's programming and other services to help them overcome domestic and sexual violence.

TESSA is the sole provider in El Paso and Teller counties of safe shelter, a 24/7 crisis line and confidential services specifically for adult and child victims of domestic violence and sexual assault. Victims are provided confidential advocacy, individual counseling, group therapy, and a full range of children's services. Confidential victim advocates empower domestic

violence survivors through assistance with safety planning, court support, emotional support, and connections to community resources designed to help clients regain self-sufficiency. All of TESSA's services focus on the safety and well-being of victims and their children.

How are We Doing?

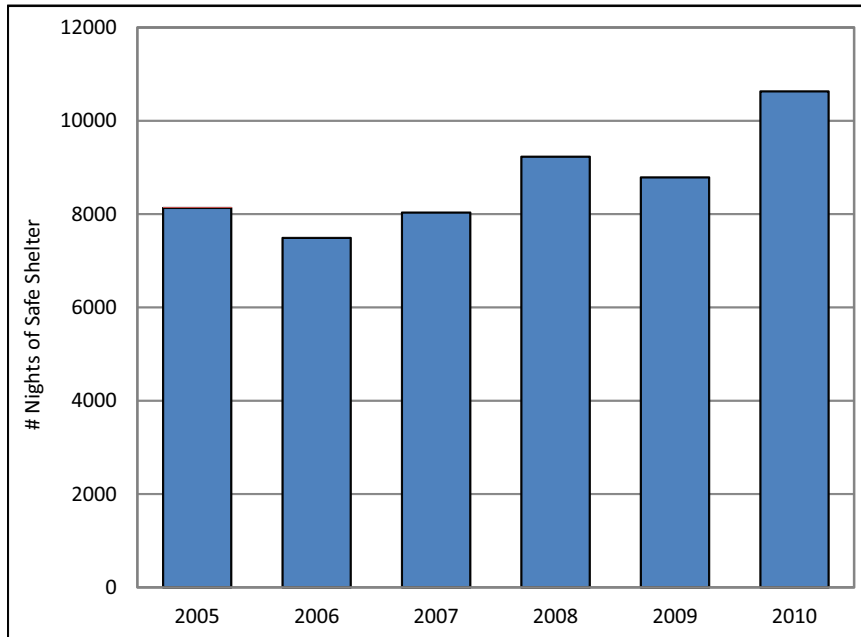
Family pets are often the forgotten victims in violent homes. There is a strong correlation between domestic violence, child abuse, and pet abuse. TESSA works with the Humane Society of the Pikes Peak Region in a "Safe Pets" program, which provides shelter for pets of families living in TESSA's Safehouse.

- 71% of pet owners entering domestic violence shelters report that their batterer had threatened, injured, or killed family pets
- 87% of batterer-perpetrated incidents of pet abuse are committed in the presence of their partners for the purpose of revenge or control
- 76% of batterer-perpetrated pet abuse incidents occur in the presence of children
- Investigation of animal abuse is often the first point of social services intervention for a family experiencing domestic violence
- Similar to domestic abuse, abusers demonstrate control over the family by threatening, harming, or killing animals
- Victims whose batterers abuse their pets report more than twice as many incidents of child abuse as compared to domestic violence victims whose batterers have not abused their pets
- Abusers harm pets to punish the victim for leaving or in attempts to coerce the victim to return

Recognizing the severity of pet abuse in violent homes, the state of Colorado signed Senate Bill 80 into law in April 2010 to protect family pets. The bill ensures that courts issuing civil protection orders have the authority to order protections for animals (as property), including awarding care and possession of the animals to victims of domestic abuse, elder abuse, or at-risk adults who are abused and who are seeking protections for themselves.

Photograph by Rudyanto Wijaya

Nights of Safe Shelter Provided for Domestic Violence Victims



Source: TESSA

The first Chart shows the number of nights/ days of safe shelter TESSA provided to adult and child victims of domestic violence and sexual assault.

The second Chart shows the number of safe shelter nights provided to victims of domestic violence and sexual assault in Albuquerque, NM and Colorado Springs, CO in 2010. TESSA of Colorado Springs and S.A.F.E. House of Albuquerque serve a very similar population size (approx. 650,000); however, S.A.F.E. House has a shelter capacity of 85 and TESSA has a shelter capacity of 36, resulting in S.A.F.E. House's ability to provide more nights of shelter to more victims each year than TESSA.

How are We Doing?

Key indicators for domestic violence show an increase in the need for safe shelter and victim advocacy. During 2010, TESSA provided 10,631 nights of safe shelter - marking an all time high and a 21% increase from 2009. Safe shelters throughout the nation have reported more victims seeking shelter and requiring longer

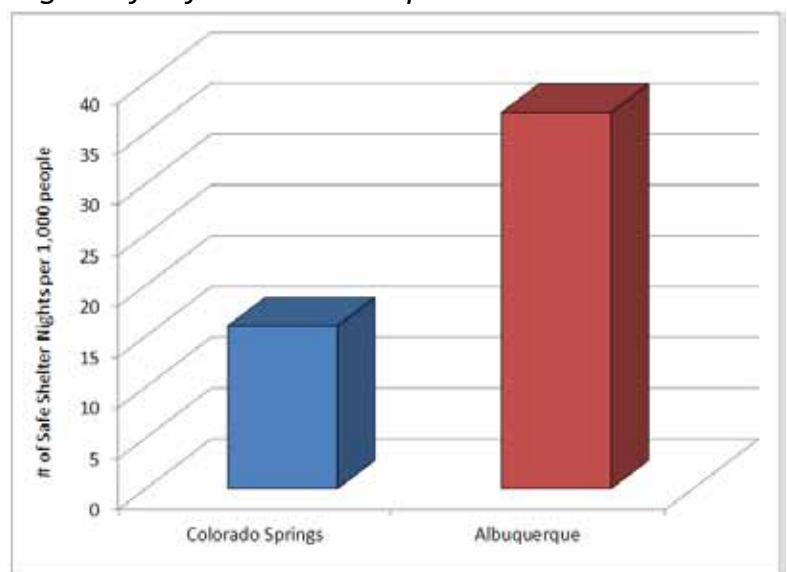
durations of stay. Many in the domestic violence prevention field attribute this increase to the economic downturn and the difficulty of securing employment and permanent housing after leaving an abusive situation, in which the abuser controls all of the family's financial resources. The number of clients seeking temporary protection orders, safety planning, counseling, and referrals increased by 15% from 2009. TESSA provided 320 children with safe shelter, play therapy, counseling, and group therapy to help mitigate the long-term impacts of exposure to violence; such as juvenile crime, substance abuse, mental health issues, and increased risk of becoming a victim or abuser in the future.

Domestic violence and sexual assault are devastating crimes that continue to affect individuals, families and the entire region. The Colorado Springs Police Department responds to 10,000-12,000 domestic violence calls for service each year. The rate of sexual assault in Colorado Springs is the highest in the state of Colorado and three times higher than the national average (City Crime Rankings 2010-11: Crime in Metropolitan America). There have been 36 domestic violence related homicides in Colorado Springs since 1990, comprising 19.7% of the city's total homicides.

Potential for Action

Crisis intervention and prevention education programs are vital to helping victims find immediate safety and breaking the cycle of violence for future generations. In 2010, victims in our community reported that more than 2,000 children had been exposed to domestic violence, yet only about 300 received services from TESSA. Enhancing community awareness of resources available to victims will help victims connect with service providers. Also, providing education about healthy relationships to community youth promotes the development of attitudes and behaviors that do not condone relationship and sexual violence and effectively prevents the continuation of domestic violence from one generation to the next. Investment in prevention and intervention programs is critical to building safe homes and healthy communities for all individuals, families, and their pets. Contact TESSA's 24-hour crisis line for help if you are in an abusive relationship: 719-633-3819, or check www.tessacs.org for information on how you can give help or get help.

Nights of Safe Shelter Comparison



Source: TESSA and S.A.F.E. House